

SAFE ANCHOR: EMBEDDED ANCHOR POINT
SAFEANCHOR: POINT D' ANCRAGE PAR SCELLEMENT
SICHERHEITSANKER: EINGELASSENER ANKERPUNKT
ANCLAJE SEGURO: PUNTO DE ANCLAJE INTEGRADO

Instruction and Benefits:

The Safeanchor meets EN 795 class A1 structural anchor for attachment to vertical, horizontal or inclined surfaces such as walls, columns, floors and lintels. The anchor is set by chemical sealing in concrete. The user attaches to the anchor via a lanyard fitted with a energy absorber or retractable block. The anchor is installed flush with the wall surface when not used. When using a simple touch brings out the anchor point for the carabiner. All system components are permanently attached, so that the anchor is operational at any time.

Technical specification:

Comes with an installer and user manual.

Material: stainless steel AISI 316

KN 12 KN

KN >25 KN

Ø 32 mm x depth of sealing 100 mm

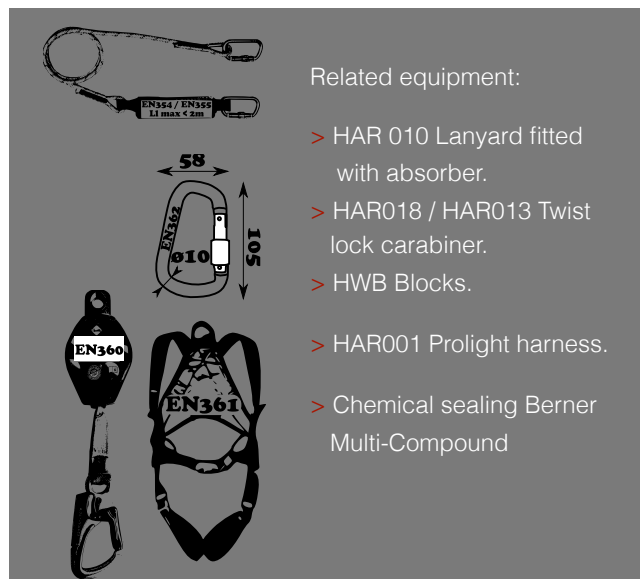
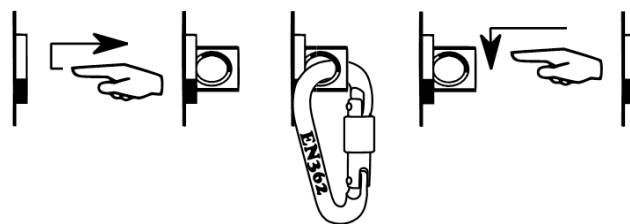
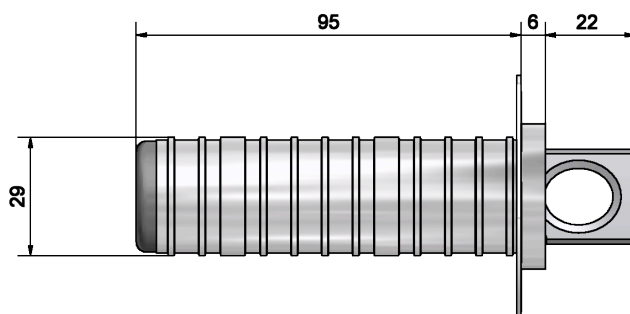
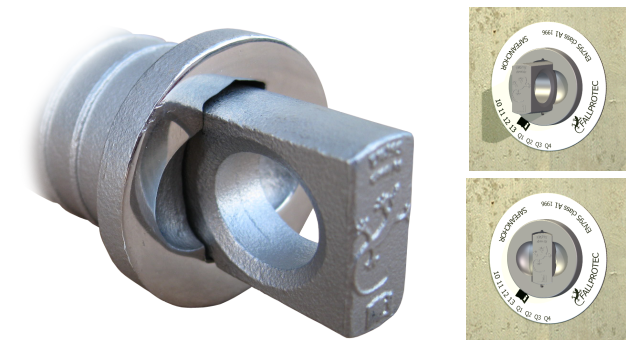
 250 gr

Compliant with EN 795 CLASS A1

MADE IN EU 

Test certificate n° AT5109376 

Community Design n°001836495



Code N°	Length	Availability
LDV 055	90 mm	Available from stock



For installations ensure that concrete quality must be at least 25 MPa.