

**MOBILE ANCHOR POINT
POINT D'ANCRAGE MOBILE
MOBILER ANKERPUNKT
PUNTO DE ANCLAJE MÓVIL**

Description:

The fall arrest anchor point consists of 3 parts :

- > A trolley can travel on rails and profiles.
- > A pair of holder allowing the connection between the trolley and the clamps.
- > The pair of clamps which match the rail or profile section having a width between 50 to 150 mm.

Applications:

To ensure safety of people working at height nearby the tracks of a overhead crane or window cleaning machine or on a steel structure made with "H" profiles:

- > Rails of overhead crane
- > Rails of window cleaning machine
- > Steel profiles IPE, IPN, U, T, HEB, HEA, HEM, L.

Use of the equipment:

- > The clamps can be opened and installed anywhere along the rail or profile.
- > The clamps and their holders may be used on the rails without the trolley to form a fix anchor point.

Compliant with EN 795 CLASS A

MADE IN EU 

PATENT PENDING

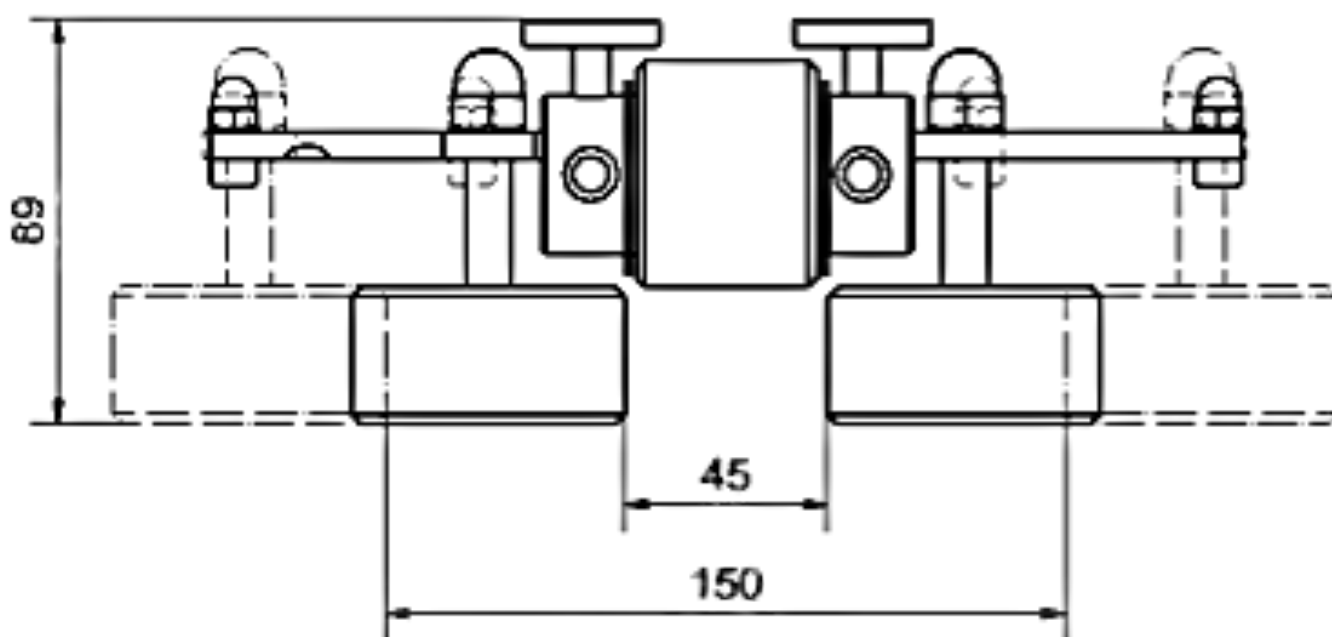


Code N°	Description	Comments	Weight
PTA 001	Trolley for rails or profiles	Maximum width of rails or profiles 50-150mm	2.4 kg
PTA 002	Holder	Fits on all types of pair of clamps	0.3 kg
PTA 003	Clamps	Info of profile section required for quotation	0,7 to 1,4 kg/pair

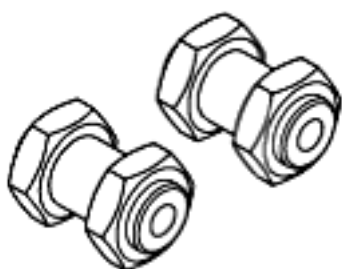


It is mandatory that a professional engineer checks the strength of the structure to which the anchor point is installed. The user must ensure that the distance required to stop a fall is not greater than the free space below the walkway. The user should wear a full body harness and a lanyard fitted with an energy absorber.

PTA 001 Trolley



PTA 002 Holder



PTA 003 Clamps

